

UNIVERSITY OF ALBERTA LIBRARY



0 1620 0303 9573

TN  
27  
A3  
N637  
v.6:  
no.5  
1938  
POLAR



EX LIBRIS  
UNIVERSITATIS  
ALBERTENSIS

---

# NOR' WEST MINER

EDMONTON, ALBERTA

*A monthly Devoted to Northern Mining Development in the Yellowknife, Great Bear and Great Slave Lakes, Goldfields, Alberta and Northern B.C., the Tourist and Game Hunting Attraction of Alberta.*

Vol. VI.  
No. 5

JULY  
1938.

TODAY—YELLOWKNIFE AND GOLDFIELDS ARE  
PAY ROLL TOWNS

COMPLIMENTS  
NOR-WEST MINER

25c A Copy



Where Poor "Lo" camped, mining companies are busy. A typical camp of the Dog River Indians, Great Slave Lake, N.W.T.

**JOHNSON** SALES—SERVICE  
**SEA-HORSE**  
**MOTORS**

R. E. BROWN CO.  
EDMONTON

\$2.00 A Year



EX LIBRIS  
UNIVERSITATIS  
ALBERTÆNSIS

The Bruce Peel  
Special Collections  
Library

Presented by

Douglas Tomlinson

TN  
27  
A3  
N637  
Vol 6  
no 5  
1938

The Yellow

L

Shipping

the Lake and the

ver

the Business of

A COMPLETE FREIGHTING AND PASSENGER SERVICE OVER  
THE SMITH PORTAGE

For Rates and Other Particulars Address

**RYAN BROS.**

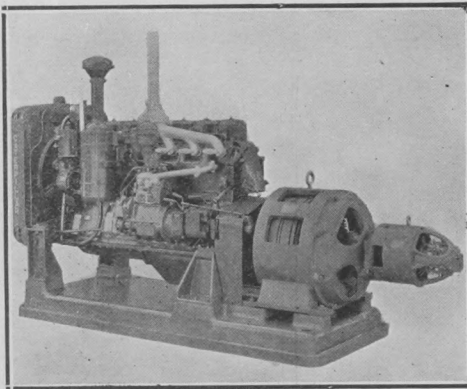
114 - 115 ADAMS BUILDING, EDMONTON, ALBERTA

FORT SMITH, N.W.T.

CANADA

**GENERAL ELECTRIC POWER for the MINE**

WITH "CATERPILLAR" DIESEL ELECTRIC GENERATOR SETS



Mine operators frequently generate their own electric power for certain mine operations with a "Caterpillar" Diesel generator set at a fraction of what it costs to furnish electric power. One mine owner reports an average saving of .8c per KWH; another generates current at a fuel cost below 1c per KWH. That's low-cost electric power.

And this typical "Caterpillar" Diesel low-cost of operation plus dependability and stamina to stay on the job is what has made "Caterpillar" Diesel generator sets preferred equipment for mine power.

See us for complete information on low-cost power with a "Caterpillar" Diesel electric generator set.

SIZE OF GENERATORS

D 17000 . . . KW 80 — D 13000 . . . KW 60  
D 8800 . . . KW 40 — D 6600 . . . KW 30  
D 4400 . . . KW 30

ALBERTA DISTRIBUTORS

**UNION TRACTOR & HARVESTER Co., Ltd.**

CALGARY

10626 101st STREET, EDMONTON

LETHBRIDGE

UNIVERSITY LIBRARY  
UNIVERSITY OF ALBERTA

# THE NOR' WEST MINER

A monthly devoted to Northern Mining Development in the Yellowknife, Great Bear and Great Slave Lakes, Goldfields, Alberta and Northern B.C. Mining districts, also the tourist and big game attractions of Alberta.

Correspondence solicited from all interested. Subscription, \$2.00 a year, Post free. Advertising Rates on application. Office of Publication, 6 Richardson Block, Edmonton, Alberta, Phone 24523.



## "SAYS THE MINER"

It is gratifying to note that the Government reports a large increase in enquiries regarding fish and game prospects in Alberta. The Government is certainly to be congratulated on the aggressive means it has taken to spread the good word abroad concerning Alberta and its sport attractions. In this connection it is also interesting to note that this magazine includes in its circulation lists, every game association of importance in Canada and the U.S.

\* \* \*

A quantity of copies of the magazine have also been sent to the Empire Exhibition at Glasgow Scotland, where they are being distributed by the Courtesy of the Canadian Trade Commissioner, in the mining section of the Exhibition.

\* \* \*

No—Mr. Jowsey, when you say the lone prospector's day is ended we cannot agree with you. There will always be real opportunity for the growing generation of prospectors as long as people use metal and Canada has large unprospected areas to be covered.

\* \* \*

It is stated on reliable authority that prospecting parties in the Northern areas have already uncovered at least ten very promising discoveries. The Consolidated, it is stated has thirty prospecting parties in the field this year.

\* \* \*

By the time this is in print, the Editor hopes to be in the Yellowknife. In order to cover the field properly, he is making the trip by canoe and outboard motor, using the old reliable Peterborough canoe and a Johnson engine. Will have plenty to say in the August issue. He is returning via the Peace.

## The Alberta Motor Boat Co., Ltd.

MANUFACTURERS

Designers — Engineers — Boat Builders

EVINRUDE and ELTO  
OUTBOARD MOTORS  
and PUMPS

Distributors for Alberta and North West Territories

WEI BUC SKIIS

Approved by Board of Transport and Civil Aviation Dept.

EDMONTON — ALBERTA

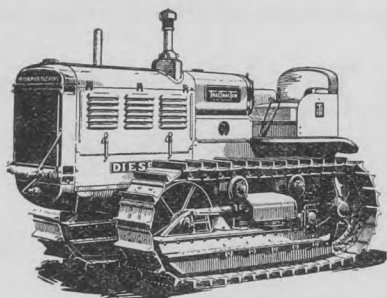
## Gorman's

LIMITED  
EDMONTON  
CALGARY  
DRUMHELLER

Suppliers of Mining Machinery and Supplies Since 1906

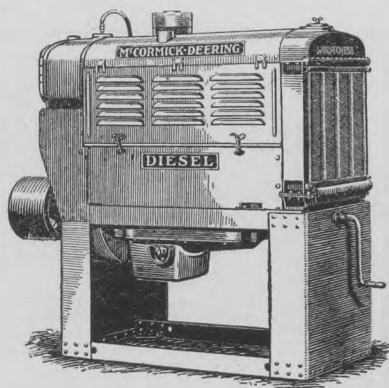
Charles E. Garnett, Manager

# International TRACTRACTORS AND POWER UNITS FOR THE MINING INDUSTRY



Few products of modern times have met with the popularity that has greeted the International line of TracTractors and Power Units. International TracTractors are available in Models T20, T35, TD 35 Diesel T40, and TD 40 Diesel International Diesel engines operate on a small quantity of low cost fuel and is the only model of heavy duty Diesel engine that can be started by hand cranking. A unique device, exclusively International, converts it into a conventional gasoline engine for starting. After the engine has warmed sufficiently for Diesel Combustion it changes over automatically to full Diesel operation.

International Power Units range in size from 22 to 110 horsepower, are available for any stationary power need. Operates on gasoline, distillate, diesel fuel and natural gas.



**INTERNATIONAL HARVESTER  
COMPANY**  
of Canada, Ltd.

10357 109th Street

Edmonton

## OUTPOST ISLAND REORGANIZED

Many local shareholders in Slave Lake Gold Mines Ltd. will be pleased to note that a reorganization has taken place in this company's affairs for the express purpose of going ahead with the development of the property, upon which it is stated, there is at least \$2,000,000 worth of ore in sight. H. M. Smillie of Toronto has underwritten 40,000 shares of the stock at 10c a share and has optioned a further 760,000 shares.

Slave Lake Gold Mines, Ltd., up to March 1938 was being developed by the N. A. Timmins Corporation, who expended some \$285,000 on the property which they then turned back to the company.

Outpost Island where the company's property is sole occupier, has had a rather hectic history. Staked early in the history of northern mining, every prospector who viewed it remarked upon the outstanding surface values, and the N. A. Timmins Corporation entered into the picture, through the Athabasca Syndicate, of which it was an unit holder. After some work was done on the property, the stock of the company was listed on the Toronto Stock Exchange, at that time being worth around \$4.00 a share, with only 180,000 shares in the hands of the public. A pool of 1,200,000 shares held in trust, not to be released until December 1937, was released in February of that year with the result that the stock broke down to as low as 10c a share.

The question of who was responsible for this break has never been solved but it is a safe bet that the Timmins Corporation did not lose any money spent on development.

The outlook today is the fact that engineers report 17,308 tons of ore in sight with average value of .5 oz. per ton, with drills revealing ore in other places as high as 13.63 oz. to the ton, and with much of the property not explored.

The Nor West Miner has always gone on record, based on real prospector information that Outpost Island has many features necessary for mine making. It has no reason to change these views and hopes to see the new organization bring in a real gold producer.

## CONQUEST OF THE NORTH

One of the most amazing motion pictures ever made — the story of man's conquest of the north—will be filmed this summer by a recently organized Edmonton company, British Documentary Films Limited, state officials.

At the present time Lou Williams, president and field director of the Co., is en route to the northern mining fields with an experienced crew of cameramen who will take thousands of feet of pictures, which will tell the whole story of the conquest of the north, pictures which will eventually show to the people in all parts of the world the work that is being done by the men who seek gold and the men who live in the north.

Williams is a young Edmontonian who has learned the motion picture business in Chicago and Hollywood.

Convinced that the true story of what is happening north of 54 should be told, Williams determined to personally make the picture which would tell the story to the world and arrangements have been made to have the pictures which his cameramen will take displayed in all corners of the earth.

In order that the pictures will be absolutely authentic there will be no "phoney" shots, says Mr. Williams. The cameramen will go out in the bush to photograph prospectors at work, they will go down into the mines they will go into the mills, and they will go in the planes and down the river in the boats in order that every phase of man's fight against nature and the whole story of northern gold can be truthfully and properly shown.

The Party, states Mr. Williams will

start from Edmonton about the first of July and journey to McMurray, down the Athabasca to Lake Athabasca and across the Lake to Goldfields. They will visit every point between McMurray and Alaska where they can get pictures which will help to tell the story. They will travel by plane to Whitehorse and to the mines at Dawson and Mayo in the Yukon, so that every part of the country will be represented in the final picture.

Finally, when the picture is completed, a feature length film will be made of selected shots to tell the story of the north, and hundreds of "shots" showing incidents of interest will be distributed through the various picture agencies, carrying into all parts of the British Empire, the United States, and the world, the true picture of the development of the Empire of the North—the true picture of the work of the men who have tapped the riches of the northland's hidden lodes of ore.

## THAT ALASKA HIGHWAY

Notwithstanding the suggestion of our B. C. friends that the only way to Alaska is via Hazelton and the coastal line, it is still reiterated that the natural route is through Edmonton to Alaska by road. Old timers proved it, engineers agreed and now today, a road from the south is being considered, it is suggested that Edmonton is on the route. It had to be from a topography point of view, from an economic point of view, and if, alas, it should be required to send troops and tanks over instead of tourists, it will do its "bit" towards safeguarding Canada and the Empire. The U. S.-Alaska highway is over half built anyhow via Edmonton.

DAMP PROOF

WEATHER PROOF

# GREAT BEAR

## SLEEPING ROBES

The Ideal Sleeping Equipment for the North

Made Exclusively by

# CANADIAN BEDDING COMPANY LTD.

EDMONTON, ALBERTA

## STRATIGRAPHY AND STRUCTURE OF SOUTHERN TURNER VALLEY

The stratigraphy and structure of southern Turner Valley field as determined by drilling, and from a study of rock outcrops are described and their economic significance interpreted by G. S. Hume in a preliminary report, issued recently by the Geological Survey Division, Department of Mines and Resources, Ottawa. In a separate folder accompanying the report are eight cross-sections showing the structure of the area, and five maps. Two of these latter show the geology along the Highwood River, and the positions of wells being drilled or located, and producing wells. Another shows the geology along Pekisko Creek along with the positions of wells being drilled or located. The topography, positions of faults, rock outcrops, wells being drilled or located, naphtha gas producers from Palaeozoic limestone, crude oil producers from Mesozoic strata, abandoned wells, and wells in the Palaeozoic which have changed from naphtha to

crude producers are shown on a map of parts of townships 18 & 19, ranges 2 & 3. There is also a map showing the geology of this latter area, and a figure sketch, showing the southward plunge and disappearance of the Turner Valley structure.

From the cross-sections it is quite evident that the dip of the strata on the west flank of Turner Valley is less in the southern than in the more northerly parts. This feature is directly related to the plunge of the Turner Valley structure southward at its south end, and the Turner Valley faulted structure is expected to pass southward into an unfaulted anticline and finally into an east-dipping monocline.

From present drilling the dip of the limestone in the vicinity of Highwood River is expected to be in a southwest rather than a west direction, at a decreasing angle. The oil producing area is thus expected to become progressively wider southward, until, owing to the increase in depth in this direction, the oil-water line is reached.

With the disappearance southward of the fault on the east side of Turner



PREFERRED BY PROSPECTORS AND MINERS FOR  
LONG LIFE, SAFETY AND SATISFACTION

Check This 6-Point Construction Before You Buy



1. Cedar Strip Construction
2. Right Materials
3. Reliable Framework
4. Selected planking
5. Proper Fastenings
6. Weather proof Finish

WRITE  
FOR  
GENERAL  
CATALOGUE  
TODAY

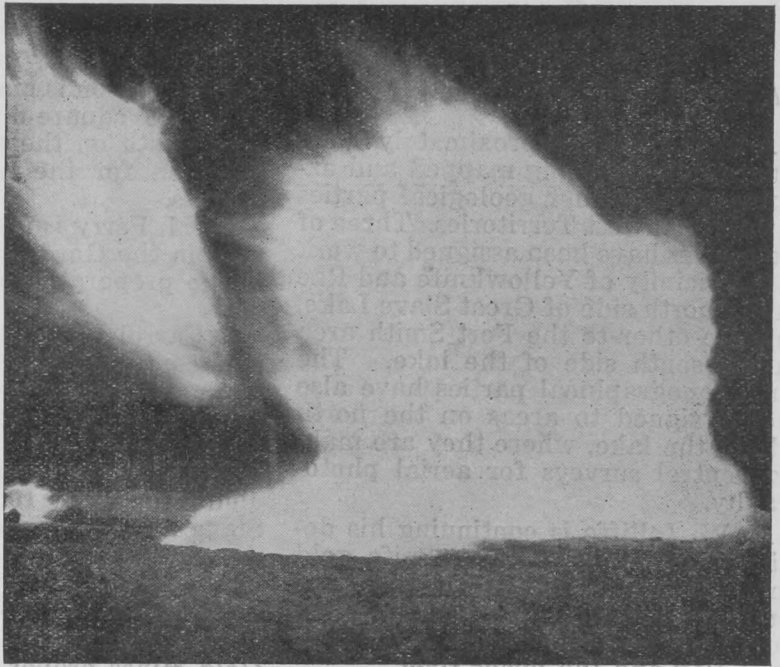
Boats and Canoes especially adapted for Northern Work.

**The Peterborough Canoe Co. Limited**

260 Water St. Peterborough, Ont.



Flares in the Turner Valley indicate huge crude oil bodies underneath.



A Gas well doing its stuff before coming into production as an oil producer .

Valley there will be an east flank to the structure. In the area where such conditions occur, drilling alone will demonstrate whether this east flank is at a depth above or below the oil-water line.

### **RAM RIVER NO 1 READY TO GO**

Ram River Oils Limited, says the "Western Oil Examiner" will start on its No. 1 well as soon as four miles of roadway can be completed to enable the company to haul in diamond drilling equipment.

Russell V. Johnson, consulting geologist of Calgary, has selected a location on the company's acreage 10 miles southwest of the Phoenix station.

Mr. Johnson, who geologized the company's holdings, states that drilling will start at the base of the Banff shales, in other words, on the top of the Devonian limestone.

The Devonian is productive in many parts of the continent, oil in quantity having been found in this formation in Moose Dome. The Michigan field which produced 67,000,000 barrels in 1936, is an outstanding example of a prolific Devonian production.

Oil should be encountered at Ram River at a maximum depth of 3,000 feet. The company has its head office in Edmonton, and J. D. Howatt, K.C., is its president. Jones and Quinn will start preliminary operations on the lease shortly.

## **EDMONTON**

### **IS THE KEY TRADING POINT to the Mineral Areas of the North**

The Athabasca Tar Sand Area, Out Post Island, Great Slave Lake, The Yellowknife Mining Area, Gordon Lake, Great Bear Lake. and The Goldfields Area

All connected direct with Edmonton by the shortest Air, Water and Rail Routes.

Edmonton has first class Air Ports—Both for Summer and winter work  
(Wheels or floats or skis)

Edmonton has served the North for a century of trading. It knows your requirements and carries full stock to meet the same.

J. W. FRY,  
Mayor.

R. J. GIBB and J. HODGSON,  
City Commissioners.

## MAPPING THE N.W.T.

A total area of approximately 3,000 square miles is being mapped and examined by the four geological parties in the Northwest Territories. Three of the parties have been assigned to work in the vicinity of Yellowknife and Rae on the north side of Great Slave Lake, and the other to the Fort Smith area on the south side of the lake. The three topographical parties have also been assigned to areas on the north side of the lake, where they are making control surveys for aerial photography.

A. W. Jolliffe is continuing his detailed study of the Yellowknife gold field. This work will form the basis for four geological maps of the more important areas adjacent to Yellowknife Bay and the lower river.

J. E. Henderson is completing an examination of the Beaulieu area, and is commencing a detailed study of the Gordon Lake gold field now the centre of considerable activity.

C. S. Lord is examining the geology of the Snare River area, north of Rae, where there are indications of valuable mineral deposits.

J. T. Wilson is mapping the geology of a 5,000 square mile area lying near Fort Smith on the east. This work is intended for the assistance of prospectors.

A. M. Perry is making traverse surveys in the Gordon Lake area for use in the preparation of a topographical map.

J. Carrol and E. S. Fry are establishing control points by astronomical methods over an area extending from Lake de Gras, westward almost to Great Bear Lake. Although remote, this area is of importance, and it includes the flying routes between Great Slave and Great Bear Lakes and the Arctic coast.

## SHAFT AT 740 FEET

The main shaft at the Eldorado Gold Mines property at Echo Bay has now reached a depth of 740 feet, officials state, and under the present development program is to be continued to 890 feet. No. 3 Vein has developed another large ore body at the 340 feet level. This has been opened up for a distance of 160 feet. It carries high grade pitchblende with silver.

## Specialists . . .

IN NORTHERN AIR TRANSPORTATION. OUR EXPERIENCE IS AT YOUR SERVICE

Write or Wire for Quotations

## MACKENZIE AIR SERVICE LIMITED

LEIGH BRINTNELL, PRESIDENT

HEAD OFFICE

Macdonald Hotel, Edmonton, Alta.

## BUILDING MATERIALS

We Can Make Prompt Shipments of All Kinds

LUMBER, SASH, DOORS, PAPER, ROOFING, ETC.

Packed So As To Arrive At Destination Without Damage

Immediate Reply to All Enquiries

## Armitage-McBain Lumber Co., Ltd.

Corner 93rd Street and Jasper Avenue

Edmonton

## THE "BARREN LANDS" THE NORTH

It is interesting to note that the so-called Barren Lands of the North, besides being capable of producing plenty of mineral, oil, timber and other natural wealth, can also produce garden and other farming produce.

OD HOPE—A settlement established in 1804 by "the Gentlemen Adventurers" into the Hudson Bay. Originally the Hudson Bay settlement was roughly 1200 miles east of God Hope.



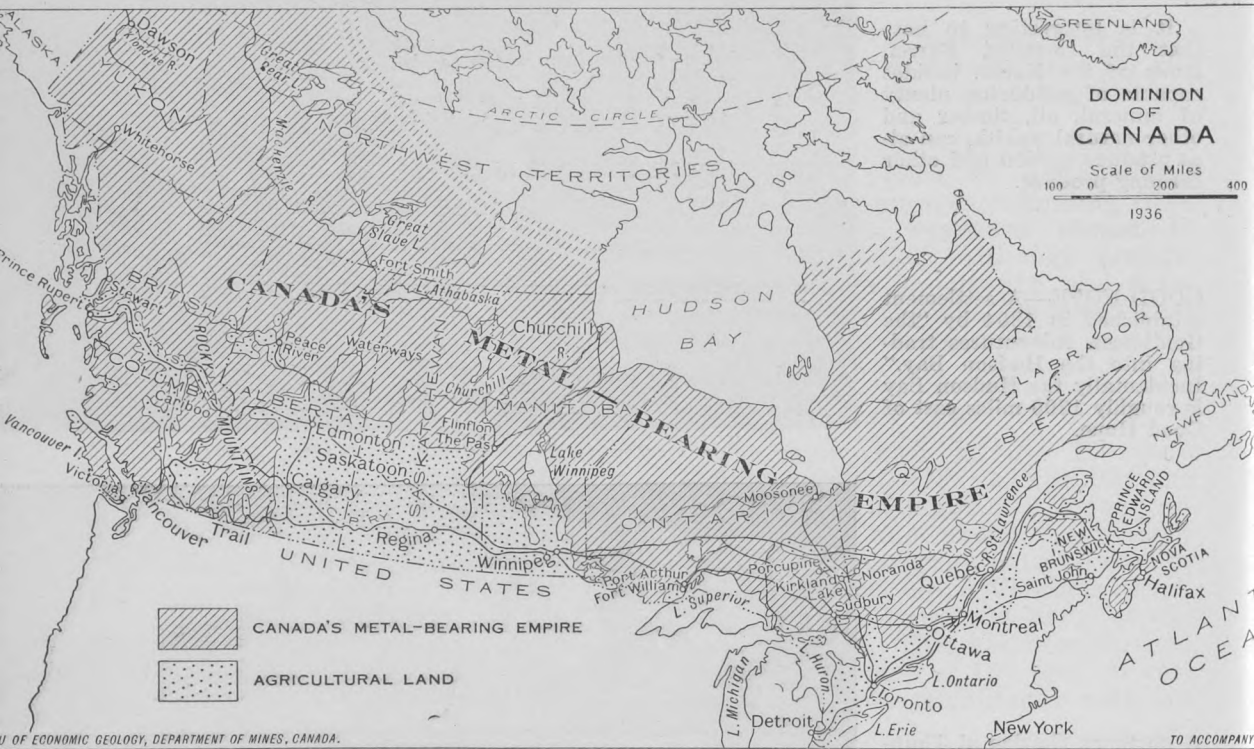
northern Garden at Thun-  
River, 80 miles north of  
Arctic circle.



arden at Fort Simpson,  
anted May 20th, plants  
asuring 24 inches high on  
y 17th.



## CANADA'S GREAT MINERAL BELT



Note how most of this formation lies in the North West Territories, north of Edmonton . . . . A new and unknown land, awaiting the prospector of the future . . . .

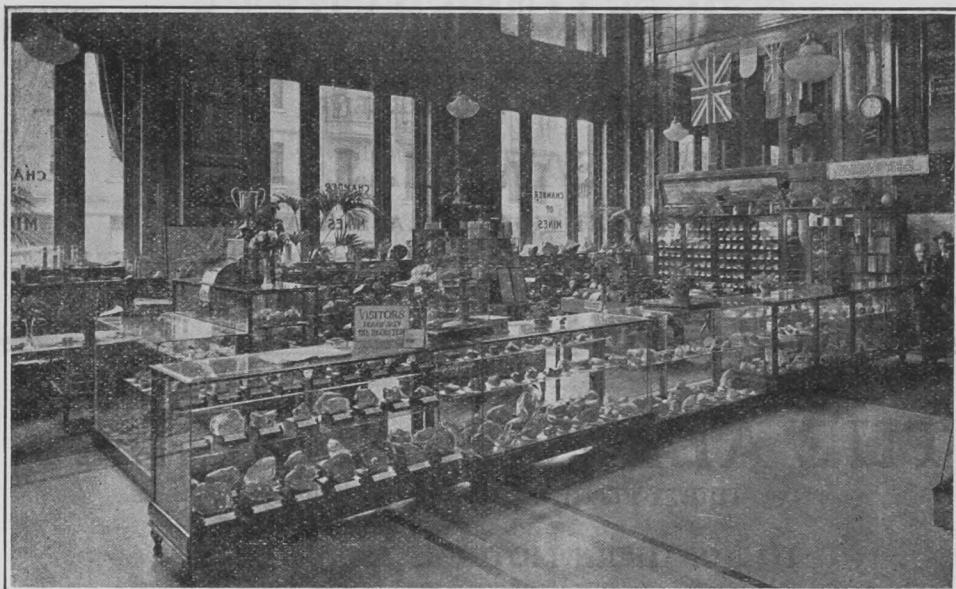
### EDMONTON A MINING CENTRE

It took the outsider to often tell the locals what they may expect from mining development. C. Hershman, recently appointed general manager of B.E.A.R. comes all the way from Toronto to tell Edmonton that its on the mining map of Canada. He intimates in a recent interview, that the three real mining towns of Canada are Toronto, Winnipeg and Edmonton. He should have also added Vancouver with its live and up-to-date Chamber of Mines. Recently in Vancouver, F. Woodside suggested that a real effort on the part of the business men of Vancouver has resulted in Vancouver recapturing the mining business of Northern B. C. and Alaska which Seat-

tle, in the days of the Yukon, grabbed from Vancouver and Victoria. Today the northern mining men are buying homes in Vancouver instead of using their surplus cash to buy "lots" in the States.

Edmonton, lucky as the mischief, has an ideal climate, is set in wonderful scenery, has farms which seldom know a crop failure, excepting only the price the wheat market sets. Is an ideal hunting and fishing territory. Even has good roads, notwithstanding critics who say "It aint" and now with the mining development in the North, is ready to say to the mining fraternity—"You get a square deal in Edmonton, we want your business, your friendship and your families to live here, and your children to go to school here". Lets' go . . .

HEAD OFFICE of the VANCOUVER CHAMBER OF MINES



This Mines Chamber has the most extensive exhibition of Canadian ores in Canada. It gives real service to prospectors and mining companies and 10,000 people registered there during 1937. It is under the management of Frank Woodside, who has handled the work for over 20 years.

## EDMONTON'S LUMBER HEADQUARTERS

When Building Materials are needed in a hurry send your orders to HAYWARD'S, at either Edmonton or Waterways.

Large stocks carried at Waterways, including, scow material, shingles, fir flooring, doors, windows, paper, prepared roofing, Donnacona and Gyproc wallboards, cement, bricks, builders' hardware, blacksmith coal, etc.

Our Facilities in Waterways enable us to give the North the Direct Service they need.

**REMEMBER — Reliable Prices and Quality Goods  
is our Policy and your Guarantee.**

# HAYWARD LUMBER CO.

LIMITED

EDMONTON

ALBERTA

# SPRUCE LUMBER STOCKS

SPRUCE LUMBER AND TIMBERS  
FOR MINING REQUIREMENTS

## CHISHOLM SAW MILLS, LIMITED

MILLS AT CHISHOLM, ALBERTA

108 Commercial Building

EDMONTON, ALBERTA

# THE ALBERTA COLLEGE

THIRTY-FIFTH ANNIVERSARY, 1903-1938

## TO NORTHERN MOTHERS AND FATHERS

Out in the North you have probably given serious thought to the question of higher education for your children.

You are far away from the usual facilities and perhaps hesitate to send your children outside, not being sure of the result.

This is where the Alberta College fills a gap.

The Alberta College has been under the same management for 35 years. It is recognized as the leading Day and Residential School of Northern Alberta.

Your children whilst in residence are assured of home comfort and that supervision which is necessary for their welfare.

Alberta College teaches:

1. **Academic Course**—Public and High School, Grades 1 to XII with a record of splendid results in Departmental Examinations.
2. **Commercial Course**—Bookkeeping, Shorthand, Typewriting and related subjects.  
**Secretarial Courses**—Combined Bookkeeping and Shorthand.  
**Office Appliances**—Including Bookkeeping and Listing Machines, Comptometer, Dictaphone, etc.
3. **Music**—Conservatory courses in all branches, including Piano, Organ, Voice Production, Violin, Theory and Harmony. Stringed and Fretted Instruments including Banjo, Guitar and Mandolin.  
98 per cent passes in Practical and Theoretical Examinations.  
Expression and Dramatic Art, Individual and Class Lessons.
4. **Correspondence Courses** in Bookkeeping, Shorthand and Penmanship.

The average Registration for the past ten years has been 1,200. There are thirty-five experienced and qualified teachers on the staff.

Board and Room and Tuition Fees, Ten Full Months—

ACADEMIC, \$375

COMMERCIAL, \$400

For Calendar and Full Information for Fall School Season Commencing  
September 6th, write:

**THE ALBERTA COLLEGE**

F. S. McCall, B.A., D.D., Principal

EDMONTON

ALBERTA



## Waterproof Watches

Specially Built for the North  
From \$19.75 to \$50.00  
Write, wire or "Holler"  
If we haven't what you want  
we will get it for you.

**IRVING & LACEY  
Limited**

10329 Jasper Ave. Edmonton

## IT WILL PAY YOU TO INVESTIGATE

In view of the active development going on in the mining North, why not enquire concerning the well located properties in the Goldfields district.

**Edmonton Athabasca  
Gold Mines, Ltd.**

709 Tegler Bldg. Ph. 21484

## PROSPEROUS LAKE AREA

Preliminary reports have been issued by the Geological Survey Division, Department of Mines and Resources, Ottawa, based on field investigation by A. W. Jolliffe.

Lying adjacent to Yellowknife Bay, the 460 square mile area is 650 miles due north of Edmonton, the nearest primary source of supplies. It may be reached by plane from Edmonton, or by river boats, with accommodation for passengers from Waterways, Alta.

Two maps accompanying the report show the geology of the area on a half mile to the inch scale and on another map is shown the geology of the Con. P. and G., and Negus groups, on a 200 feet to the inch scale. Bedrock is well exposed throughout most of the area, which is underlain entirely by rocks of Precambrian age.

Copies of the report may be obtained from the Alberta and North West Chamber of Mines, Edmonton, Alberta.

## CECIL HOTEL

104th Street and Jasper Avenue  
FOR CLEANLINESS, CIVILITY  
AND WELL VENTILATED  
ROOMS

Rates: \$1 up — Special Weekly  
Rates

PHONE 21131

Mr. Beauchamp, Prop.  
EDMONTON ALBERTA



## Miners and Prospectors . .

LET US HANDLE YOUR CANVAS NEEDS  
YOU WILL BE COMPLETELY SATISFIED

Manufacturers and Dealers in  
TENTS, TARPAULINS, SLEEPING ROBES,  
MOSQUITO BARS, PACK-SACKS, DOG-SLED  
COVERS, AEROPLANE ENGINE COVERS, etc.

Write for our Catalogue now

**NORTH WEST TENT & AWNING CO.**

9921 JASPER AVENUE

EDMONTON, ALBERTA

## THE WOLVES

I'll tell you a tale that will fill you  
with fright,

Of what happened to me one cold  
winter's night,

When I had a trapline on Lac St. Joe,  
And was breaking a trail through the  
virgin snow.

I was filled with a joy that was hard  
to explain,  
As I thought of a ballad, an old re-  
frain,  
Of the miner that left the old home-  
stead dear,  
And had the dream which brought it  
near.

When all of a sudden I was stilled in  
my track,  
As the timber wolves howled behind  
my back,

They were right at my heels and  
thirsty for blood,  
So I had to act quick or my name was  
mud.

I was armed with a rifle, a three-o-  
three  
But I lost no time as I ran for a tree,  
I had just seven shells for to save my  
skin,  
And I got seven wolves still my  
chances were slim.

As fast as I killed them, as kill them  
I must  
They were torn and devoured with  
savage lust,  
For game was scarce and the brutes  
were wild,  
And I was afraid and as scared as a  
child.

They were screeching and howling,  
for help it seemed,

## DON'T RISK THEFT!

OF YOUR

### STOCKS, BONDS OR VALUABLES

When They Can Be Safe in One of Our  
**SAFETY DEPOSIT BOXES**

### ACCESSIBLE 8 HOURS A DAY

From 9 a.m. to 5 p.m. Saturday, 9 a.m. to 1 p.m.

INQUIRIES INVITED

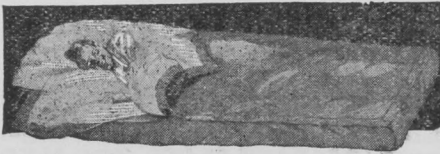
## The Canada Permanent Trust Company

10126-100th Street.

H. L. SPANKIE, Manager.

## WOODS 3 STAR EIDERDOWN ROBES

ALWAYS STOCKED



Complete Range of Woods Tents, Par-  
kas, Packsacks and everything for Pros-  
pector, Miner and Camper.

Woods Famous Explorer Parkas, lined,  
or unlined—Extra light weight, short or  
full Zippers.

**WOODS QUALITY CLOTHING—EVERY ARTICLE GUARANTEED**

**SPECIAL—Wood's Prospector's (full size) Eiderdown \$27.50**

## UNCLE BEN'S EXCHANGE

(26 year's experience)

OUR NEW LOCATION

Next Door to Rialto Theatre — 10138 - 101st Street, Edmonton

WE SPECIALIZE IN MAIL ORDERS



To get me from my perch, and they  
figured and schemed,  
And all through the night they held  
me at bay,  
Until they retreated at break of day.

First one, then another, would slink  
through the bush,  
Now only two left and they weren't in  
a rush,  
They would look up at me with their  
wicked eyes,  
Then rend the air with unearthly cries.

But these two were cunning, they  
wouldn't call quit,  
They'd howl for awhile, and then  
they'd just sit,  
Until at last I saw them go,  
And watched their tracks in the  
crimson snow.

I'd give them time to get far away,  
Then I'd climb down, go the opposite  
way,  
I'd made my plans and made a new  
track,

But was filled with remorse as those  
two came back,

I had gained a new courage that lent  
wings to my feet,  
And I broke all speed records as I  
made my retreat,  
Yes the wolves had returned, but  
what surprised me,  
Was they'd brought back a beaver to  
cut down the tree.

—J. W. Horan.

## Alexander Diamond Drill Co. Ltd.

C.P.R. Bldg., Toronto  
EL. 2289

DRILLS AND CREWS  
IMMEDIATELY AVAILABLE IN  
Amos, Rouyn, Red Lake, Kenora,  
Yellowknife, N.W.T., and anywhere  
else in Canada

1 Cedar St. New York; Dominion  
Square Bldg., Montreal; Empire  
Block, Edmonton

## HELLO THE NORTH!

We now stock a large range of Wood's Sleeping Robes, Parkas  
Packers and clothing suitable for Northern purposes.

Write or radio us for all your needs.

## JOHNSTONE WALKER LIMITED

Edmonton's Own Store

Established Over 50 Years Ago.

MILLS AT SLAVE RIVER AND NAGLE CHANNEL

## FORT RESOLUTION LUMBER CO., LTD.

Manufacturers of:

LUMBER — MILLWORK — SHINGLES

MINING TIMBERS A SPECIALTY — Wedges — Core Boxes — Large stocks of  
Lumber cut last winter on hand ready for prompt shipment. Avoid uncertainty  
and low water transportation problems by ordering from the North's own mills  
where quality and service are bywords.

Business Manager, Robert Porritt

Mill Manager, Allan MacDonald

HEAD OFFICE AT FORT RESOLUTION, N.W.T.

**LIBERTY MACHINE  
WORKS LTD.**

Equipment to handle any work  
**Sam Nichols, Manager**  
10247 103rd Street,  
Edmonton Alberta

---

**A. C. BARNES**

Speed Shorthand and  
Stenography—accurate  
service guaranteed  
719 McLeod Bldg. Edmonton  
Phone  
Office 21313 — Res. 32514  
(Member National Shorthand  
Reporters' Association)

---

**JOHNSON'S**

The Leading Cafe in Edmonton  
Cor. Jasper Ave. and 101st Street

---

**ALBERTA ELECTRIC  
SUPPLIES LTD.**

H. S. Craig, Manager  
Wholesale Distributors  
McFarland Bldg. Edmonton -  
Phone 27231

---

**NORTHERNERS . . . .**

Your eyes are all important  
When necessary consult

**Wm. T. Innes**

Optician 10128 101st Street,  
Edmonton

---

**RAILS**

C. S. Sutherland, Ltd.,  
Edmonton  
Evans, Coleman & Evans,  
Vancouver, B.C.

---

**BRONZE, SEMI-STEEL and  
ALLOY CASTINGS**

Machine and Blacksmith Work  
Best of Service and Workmanship  
Norwood Foundry Co. Ltd.  
9111 111 Ave. Ph. 71742

---

**O. D. BUSH**

**DIAMOND DRILLING  
CONTRACTOR**  
Bank of Nova Scotia Bldg.  
Edmonton, Alta.  
Day Phone 21151  
Night Phone 32489

---

**DOROTHY SINGLETON—**  
Public Stenographer and  
Mineographing—Legal work  
a Specialty—Agreements Re-  
ports, Letters, etc., Correctly  
composed at reasonable rates  
All work strictly confidential  
Phones: 22587 - 83063, 634  
Tegler Building, Edmonton.

---

**Assayers and Analysts**

The  
**CHRISTOPHER RILEY**  
Assaying Co., Ltd.  
10176 104th St., Edmonton  
Alta., Phone 22313

---

**TEA AND COFFEE**

Bakewell Tea & Coffee Co.  
Ideal for Northern use. Ask for  
Bakewell Coffee  
10237 109th Street Phone 24998

---

**MINING STOCKS**

**GREAT BEAR LAKE, YEL-  
LOWKNIFE, GOLDFIELDS  
and Others**

Handled through the facili-  
ties of our private leased  
wires leading to all important  
exchanges.

**GILLESPIE GRAIN  
CO. LIMITED**

McLeod Bldg., Edmonton

---

**W. T. COTTLE  
GUNSMITH**

10250 101st Street  
Repairs to all makes of Guns  
Gun Parts and Rifle Sights

---

**MAPS**

Up to date and complete Yellow-  
knife, Goldfields, Gordon Lake,  
Great Bear and Great Slave.  
Surveys, Drafting, Engineer  
Reports

**C. B. ATKINS**

Surveyor and Engineer  
510 Agency Bldg. Edmonton

---

For Blue Printing, Drafting,  
Engineer's Supplies

**TURNER DRAFTING CO.**

McLeod Building  
Ph. 21561 Edmonton, Alta.

---

**H. A. MACKIE, K.C.**

Special Attention to Legal  
Work for Mining Interests  
109 Commercial Chambers  
Edmonton, Alta. Ph. 25376

---

**SAW MILL MACHINERY**

Emergency Mining Repairs

**NICHOLS BROS.**

Machinists, Brass and Iron  
Founders  
10103 95th St. Edmonton, Alta.

---

**FOR TANNING . . . .**

Ship your fur and hides to

**EDMONTON TANNERY**

9272 110a Avenue EDMONTON  
(Best Work and Service)

---

**BARBER, BEAUTY and  
Billiard Supplies**  
Smallware and Smoker  
Supplies

**ALBERTA SUPPLY CO.  
(Wholesale)**

7 Richardson Bldg.  
Edmonton

---

**DENTISTRY**

**DR. L. R. DODDS**

Visiting McMurray and  
Smith during month  
of May

Write for Appointment  
408 McLeod Bldg.

Phone 26757

Edmonton, Alberta

---

**BUILDING MATERIAL**

**OF ALL KINDS**

Lumber, Sash, Doors, Glass,  
Ten Test Board, Core Boxes,  
Scow Planking

**PRICES RIGHT**

**W. H. CLARK**

LUMBER CO. LTD.  
109th Street EDMONTON

---

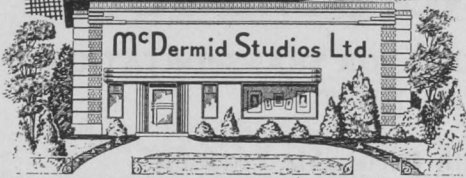
**CHECKER TAXICAB  
Limited**

MILLER, Manager  
PHONE 21567

---

# McDermids DRAW MAPS

ILLUSTRATE FOLDERS  
AND MAKE  
PHOTO-ENGRAVINGS  
FOR EVERY  
PRINTING PURPOSE



**10024 - 101st STREET**  
*Near the Journal* ~ EDMONTON

## GLASS - PAINT

British Glass  
For All Purposes

KwicKwork Rubber Enamel  
The All Purpose Surface Saver for  
Interior and Exterior

### PILKINGTON BROS.

(Canada) Ltd.  
10364-105th St.                      Edmonton

## Prospectors and Trappers Down North!

We Manufacture and Specialize for  
Your Needs.

Tents — Tarpaulins — Dog Harness,  
Packsacks, Dunnage Bags, etc.  
Pack Saddles and Leatherwork

**PRICES RIGHT**

And Guarantee Them to Stand the Wear

## WELSH'S

10315-101st Street                      Edmonton  
Phone 22721

## Chrome-Vanadium TOOLS

for  
MINING  
AVIATION and  
AUTOMOTIVE  
WORK

Highest Quality — Lowest Prices

Hettrick Waterproof  
TENTS — TARPAULINS and  
SUPPLIES for the PROSPECTOR

Wholesale and Retail.

Mail Inquiries Promptly  
Attended to.

**MUNRO'S CUT RATE  
HARDWARE AND  
AUTO SUPPLIES LTD.**

9908 - 102 Ave., Edmonton, Alta.  
Phone 22573

## VOGUE ICE CREAM

SPECIALLY MADE AND

PACKED FOR

NORTH COUNTRY TRADE

---

## Vogue Ice Cream Co.

10059 101 Street  
EDMONTON

## **ATHONA PROPOSES TO OPEN CUT**

According to statements made at the annual meeting of Athona Mines Ltd., engineers have recommended an open cutting method for mining of the property. The company has developed an ore body of approximately 1,000,000 tons averaging around \$3.50 a ton. Officials estimate that the ore can be mined by this method at a cost of 45c a ton on a 1500 daily tonnage production. It is also stated that the company is negotiating with the Consolidated Mining and Smelting Co. for milling facilities for treatment of the ores.

## **A MILLION AND A HALF FOR SASKATCHEWAN**

Saskatchewan recently borrowed one million and a half dollars at 2% from the Dominion government for mining road construction in Saskatchewan. One wonders why Alberta cannot do the same, even if some people do not like to do business with Ottawa. Dollars are not supposed to have any conscience and surely Ottawa dollars so freely offered should be accepted gracefully by politicians of other faiths. Its for the ultimate good of Alberta and its mining and other industries.

# **E. A. BUTLER AND COMPANY**

**WHOLESALE MEATS AND REFRIGERATOR TRANSPORTATION  
TO YELLOWKNIFE, N.W.T.**

**Supplying the New North With Perishable Products.**

(BRANCHES AT FORT SMITH, N.W.T., AND  
FORT VERMILION, ALBERTA)

## **IDEAL FOR THE NORTH...**

**COOLERATOR REFRIGERATION ANSWERS EVERY  
REQUIREMENT IN THE NORTH**

Coolerators can be obtained for any purpose where  
food preservation is the main issue.

**For Price List—Address**

## **ARCTIC ICE COMPANY LIMITED**

**EDMONTON - - - - - ALBERTA**

## **You Strike It Rich...**

**Everytime you bite into Bread that's buttered with.**

**"CITY DAIRY"**

**FIRST GRADE CREAMERY BUTTER**

**Good as Gold — and much more satisfying**

**MADE BY**

## **EDMONTON CITY DAIRY LIMITED**

**PLANT ON 109th STREET, EDMONTON**

**PHONE 25151**

# MACDONALD'S CONSOLIDATED LTD.

WESTERN CANADA'S LARGEST WHOLESALE GROCERS

37 Houses West of the Great Lakes.

6 in Northern Alberta to serve you.

Edmonton, Peace River, Grande Prairie,  
Dawson Creek, Camrose and Red Deer.

## Experienced in Northern Shipping

Quality Merchandise at Fair Prices.

**FURS!**—We are fully licensed to handle FURS

First operating in Winnipeg and North Battleford in 1871.

# MACDONALD'S CONSOLIDATED LTD.

EDMONTON

## ELECTRIC POWER

IN THE

## TURNER VALLEY OIL FIELD

**ELECTRIC POWER** has resulted in improved methods of Oil Production from drilling rig to service station.

Modern Oil wells are equipped with electric drive, providing the finest control and lowest costs, combined with dependability.

In **TURNER VALLEY**, electric power from the transmission lines of **CALGARY POWER COMPANY** is serving many drilling projects in the more efficient and economical development of the industry.

# CALGARY POWER COMPANY

LIMITED

**"Serving Alberta"**



**Expert Water Transport**

for

**Northern Mining  
Interests**

to

- . **GOLDFIELDS**
- . **YELLOWKNIFE**
- . **OUTPOST ISLAND**
- . **FORT RAE**

**and all other Northern Points.**

Write or Wire

**MACKENZIE RIVER TRANSPORT**

Waterways, Alberta

**Hudson's Bay Company.**

INCORPORATED 2<sup>ND</sup> MAY 1670.



